

**MAP  
MAP**

**VISITOR GUIDE**

**CHM**

**MAD**

# WELCOME

From the heart of Silicon Valley, CHM decodes technology through preservation, connection, exploration, and conversation. We share insights gleaned from our comprehensive exhibits, interactive learning experiences, dynamic programming, and an incomparable collection of computing artifacts and oral histories in pursuit of our vision to shape a better future. Learn more about our vision and mission on our website [computerhistory.org/about](https://computerhistory.org/about).

## DINE AND SHOP

Take a break in the Cloud Bistro café during your visit to CHM or stop in any time you're in the neighborhood. For a unique gift or fun memento, shop at the CHM Store, where all proceeds support Museum programs, exhibitions, and collections. The café and store are located in the Museum lobby.

Museum admission not required.

Members receive a 10% discount on all purchases.

Open during regular Museum hours.



### REVOLUTION: THE FIRST 2000 YEARS OF COMPUTING

Experience 19 galleries filled with over a thousand artifacts and an array of multimedia experiences that chronicle the history of computing, from the abacus to the smartphone. Explore the people and inventions that have revolutionized the world.



### DEC PDP-1 AND IBM 1401 DEMO LABS\*

Learn how the DEC PDP-1 mini-computer captivated a generation of hackers with its real-time capabilities, advanced graphics, and interstellar game *Spacewar!* Discover the sights and sounds of a 1960s business center, featuring the popular IBM 1401 mainframe computer.



### MAKE SOFTWARE: CHANGE THE WORLD!

Explore the stories behind seven game-changing applications: MP3, Photoshop, MRI, Car Crash Simulation, Wikipedia, Texting, and *World of Warcraft*. The Stata Family Software Lab anchors this interactive exhibition, and introduces visitors to basic programming concepts and hands-on coding activities.



### WHERE TO NEXT?

Self-driving cars for the public road have been a research project for over 80 years. Waymo, a spinoff from Google's self-driving car project, introduced Firefly in 2014—one of the first cars designed from scratch to be self-driving.



### CONDUCTING CREATIVITY: ORCHESTRIONS BY MARK MOTHERSBAUGH\*

These imaginative instruments were popular among German nobility in the 1850s. But for contemporary artist and musician Mark Mothersbaugh, they capture his personal journey with technology and art. *Conducting Creativity* is located in the CHM Learning Lab.

\* Inquire with our front desk about demonstration times.

## LEARNING LAB

The Learning Lab is a welcoming, innovative space for exploration and discovery. Find changing exhibits that spark imagination, hands-on activities that ignite curiosity, and educational resources that give everyone a new way to explore technology.

The Learning Lab accommodates drop-in public access as well as a full calendar of community events and educational programs, workshops, and activities. Contact [education@computerhistory.org](mailto:education@computerhistory.org) to learn more about our educational offerings.

### VISITOR GUIDELINES

Please observe the following guidelines for the comfort of our guests and the preservation of our precious artifacts:

Historical artifacts are priceless and easily damaged. Please do not touch them.

Personal nonflash photography is permitted throughout the Museum's exhibition areas. Use of flash, tripods, or other equipment is prohibited.

No backpacks or luggage allowed in the exhibition areas.

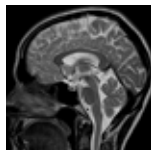
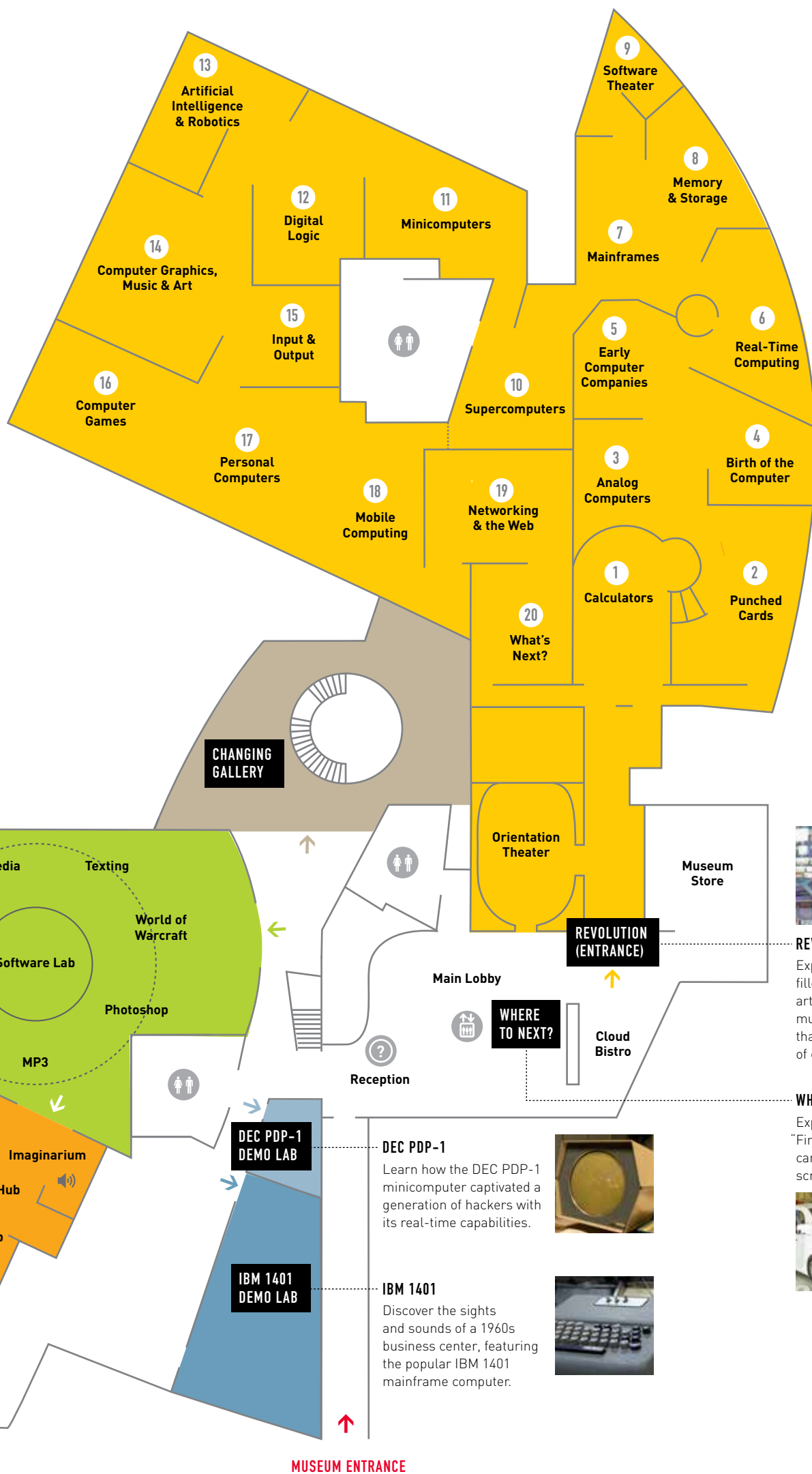
Ticket is valid only for the date indicated. No refunds or exchanges.

Food and drink are not permitted in the exhibition areas.

The Museum is not responsible for lost or stolen articles.

Children ages 12 and under must be accompanied by an adult.

# MUSEUM MAP



**MAKE SOFTWARE**  
Explore the stories behind seven game-changing applications: MP3, Photoshop, MRI, Car Crash Simulation, Wikipedia, Texting, and World of Warcraft.

**MAKE SOFTWARE: CHANGE THE WORLD!**

**THE LEARNING LAB**  
Find changing exhibits that spark imagination, hands-on activities that ignite curiosity, and educational resources that give everyone a new way to explore technology.



**CHANGING GALLERY**

**Orientation Theater**

**Museum Store**

**REVOLUTION (ENTRANCE)**



**REVOLUTION**  
Experience 19 galleries filled with over a thousand artifacts and an array of multimedia experiences that chronicle the history of computing.

**WHERE TO NEXT?**

**WHERE TO?**  
Explore the Waymo "Firefly"—one of the first cars designed from scratch to be self-driving.



**DEC PDP-1 DEMO LAB**

**DEC PDP-1**  
Learn how the DEC PDP-1 minicomputer captivated a generation of hackers with its real-time capabilities.



**IBM 1401 DEMO LAB**

**IBM 1401**  
Discover the sights and sounds of a 1960s business center, featuring the popular IBM 1401 mainframe computer.



**MUSEUM ENTRANCE**

- Restrooms
- Elevator

**Exhibition Guidelines (Ground Floor):**

- No Food or Drink
- No Flash Photography
- Do Not Touch the Artifacts
- No Backpacks or Luggage

# MUSEUM INFO

## MUSEUM HOURS

Wednesday–Sunday, 10 a.m.– 5 p.m.  
Check CHM's website for special hours

## MEMBERSHIP

Choose the membership level that's right for you and enjoy benefits like free admission, café and store discounts, and exclusive invitations to CHM events. For more information, visit our Reception Desk or [computerhistory.org/join](https://computerhistory.org/join).

## SUPPORT

Contributions to CHM support our work in preservation, exploration, connection, and conversation. Help us fulfill our mission to decode technology for everyone by giving a gift today. For more information, visit [computerhistory.org/donate-now](https://computerhistory.org/donate-now).

## COAT CHECK

A coat check is available during regular Museum hours for coats, backpacks, luggage, and large strollers.

## LOST AND FOUND

Lost and Found is located at the Reception Desk.

## WI-FI

Wi-Fi is available in the Cloud Bistro, exhibition areas, and front patio.

## CONTACT US

1401 N. Shoreline Blvd.  
Mountain View, CA 94043  
650.810.1010

## CONNECT

@computerhistory



[computerhistory.org/visit](https://computerhistory.org/visit)