

**MAP  
MAP**

**VISITOR GUIDE**

**CHM**

**MAD**

# WELCOME

From the heart of Silicon Valley, CHM decodes technology through preservation, connection, exploration, and conversation. We share insights gleaned from our comprehensive exhibits, interactive learning experiences, dynamic programming, and an incomparable collection of computing artifacts and oral histories in pursuit of our vision to shape a better future. Learn more about our vision and mission on our website [computerhistory.org/about](https://computerhistory.org/about).

## DINE AND SHOP

Take a break in the Cloud Bistro café during your visit to CHM or stop in any time you're in the neighborhood. For a unique gift or fun memento, shop at the CHM Store, where all proceeds support Museum programs, exhibitions, and collections. The café and store are located in the Museum lobby.

- Museum admission not required.
- Members receive a 10% discount on all purchases.
- Open during regular Museum hours.

## SUPPORT

Contributions to CHM support our work in preservation, exploration, connection, and conversation. Help us fulfill our mission to decode technology for everyone by giving a gift today. For more information, visit [computerhistory.org/donate](https://computerhistory.org/donate)



**FIRST STEPS ON THE PATH TO COMPUTERS**

Brink calculating interest. Kith finding an elusive. Progression designing outlines. We made calculations every day. And for as long as we've juggled numbers greater than our fingers and toes, we've sought aids to make computations easy and accurate.

For centuries, calculators were the only machines to help us compute. A long lineage of devices stretching from the ancient abacus to today's digital compass.

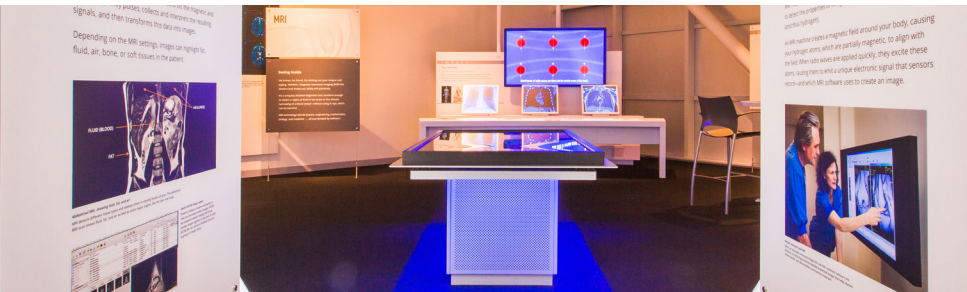
## REVOLUTION: THE FIRST 2000 YEARS OF COMPUTING

Experience 20 galleries filled with over a thousand artifacts and an array of multimedia experiences that chronicle the history of computing, from the abacus to the smartphone. Explore the people and inventions that have revolutionized the world.



## DEC PDP-1 AND IBM 1401 DEMO LABS

Learn how the DEC PDP-1 mini-computer captivated a generation of hackers with its real-time capabilities, advanced graphics, and interstellar game *Spacewar!* Discover the sights and sounds of a 1960s business center, featuring the popular IBM 1401 main-frame computer. (See front desk for Lab demonstration schedule.)



## MAKE SOFTWARE: CHANGE THE WORLD!

Explore the stories behind seven game-changing applications: MP3, Photoshop, MRI, Car Crash Simulation, Wikipedia, Texting, and *World of Warcraft*. The Stata Family Software Lab anchors this interactive exhibition, and introduces visitors to basic programming concepts and hands-on coding activities.

# LEARNING LAB

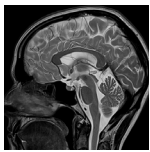
The Learning Lab is a welcoming, innovative space for exploration and discovery. Find changing exhibits that spark imagination, hands-on activities that ignite curiosity, and educational resources that give everyone a new way to explore technology.

The Learning Lab accommodates drop-in public access as well as a full calendar of community events and educational programs, workshops, and activities. Contact [education@computerhistory.org](mailto:education@computerhistory.org) to learn more about our educational offerings.



All exhibits are located in the Ground Floor.

# MUSEUM MAP



**MAKE SOFTWARE**  
Explore the stories behind seven game-changing applications: MP3, Photoshop, MRI, Car Crash Simulation, Wikipedia, Texting, and World of Warcraft.

**MAKE SOFTWARE: CHANGE THE WORLD!**

**THE LEARNING LAB**

**LEARNING LAB**  
Find changing exhibits that spark imagination, hands-on activities that ignite curiosity, and educational resources that give everyone a new way to explore technology.

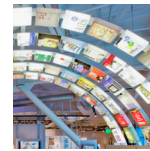


**CHANGING GALLERY**

**Orientation Theater**

**Museum Store**

**REVOLUTION (ENTRANCE)**



**REVOLUTION**  
Experience 19 galleries filled with over a thousand artifacts and an array of multimedia experiences that chronicle the history of computing.

**Main Lobby**

**Reception**

**DEC PDP-1 DEMO LAB**

**DEC PDP-1**  
Learn how the DEC PDP-1 minicomputer captivated a generation of hackers with its real-time capabilities.



**IBM 1401 DEMO LAB**

**IBM 1401**  
Discover the sights and sounds of a 1960s business center, featuring the popular IBM 1401 mainframe computer.



**MUSEUM ENTRANCE**

Restrooms

Elevator

**Exhibition Guidelines (Ground Floor):**

No Food or Drink

No Flash Photography

Do Not Touch the Artifacts

No Backpacks or Luggage

# MUSEUM INFO

## MUSEUM HOURS

Saturday & Sunday,  
10 a.m. – 5 p.m.  
Check Museum's website  
for special hours  
[computerhistory.org/visit](https://www.computerhistory.org/visit)

## WI-FI

Wi-Fi is available in the  
Cloud Bistro, exhibition  
areas, and front patio.

## CONTACT US

1401 N. Shoreline Blvd.  
Mountain View, CA 94043  
650.810.1010

## CONNECT

@computerhistory



---

## VISITOR GUIDELINES

A safe and enjoyable experience is important to us. In response to COVID-19, we've added precautions to help safeguard our staff and visitors. We ask that everyone coming to CHM observe the following guidelines:

### COVID-19 Guidelines

Following Santa Clara County recommendations, all visitors are required to be fully vaccinated for COVID-19 for a minimum of two weeks from their last shot. Visitors must provide proof of full COVID-19 vaccination and a valid photo ID is required for all visitors, without exception.

Valid forms of proof of vaccination include:

- An original, a copy, or a picture of your CDC vaccination card.
- Personal digital COVID-19 vaccine record issued by the State of California or by an approved private company.

Masks are required for all visitors even if vaccinated.

Visitors should maintain physical distancing and keep at least six feet from others whenever possible.

Please wash hands and use hand sanitizer regularly during your visit.

Coat check is temporarily closed. No backpacks or luggage are allowed in the exhibition areas.

### Non-COVID-19 Guidelines

Children ages 12 and under must be accompanied by an adult.

Personal non-flash photography is permitted throughout the exhibition areas. Use of flash, tripods, or other equipment is prohibited.

Food and drink are not permitted in the exhibition areas.

Historical artifacts are priceless and easily damaged. Please do not touch them.

Tickets are non-refundable.

The Museum is not responsible for lost or stolen articles.